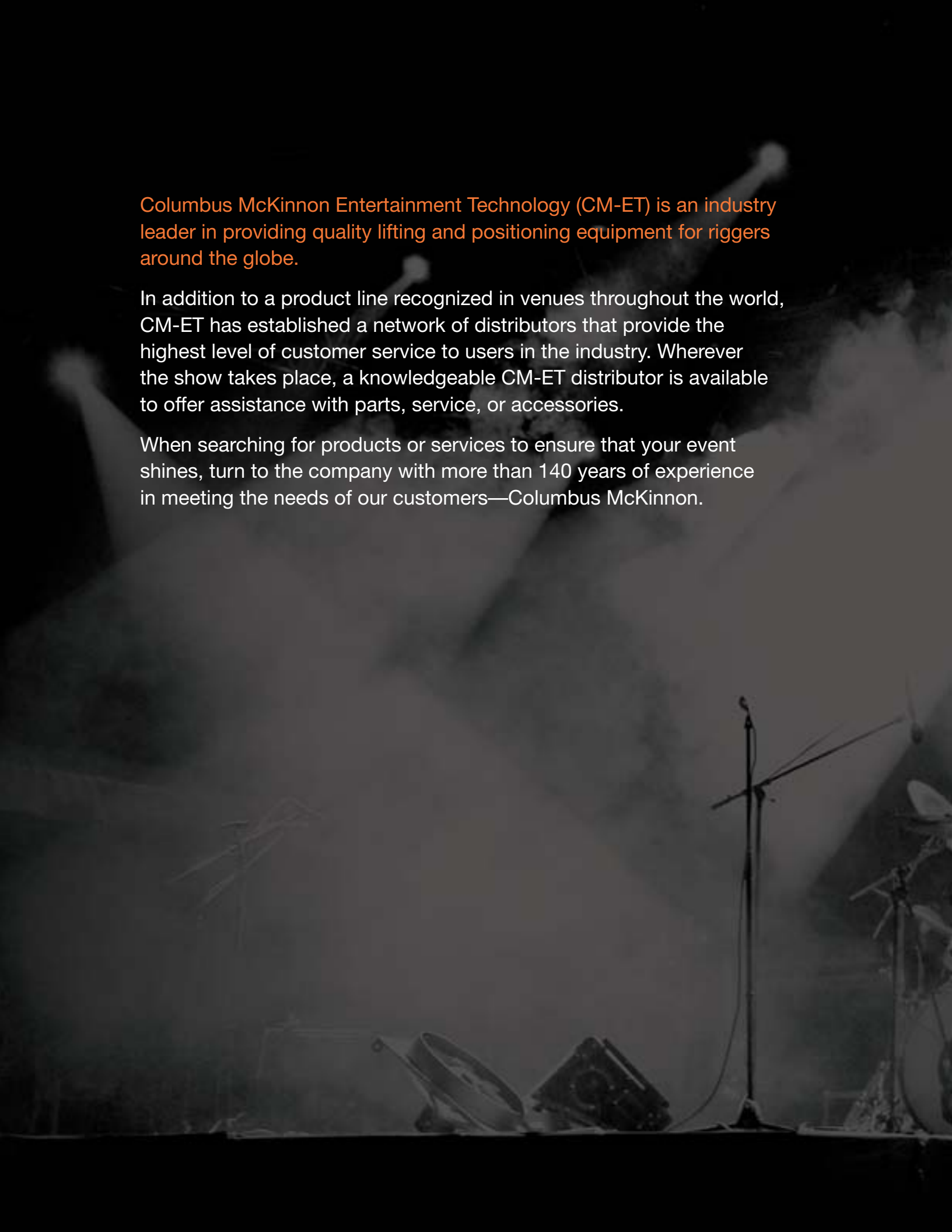




# ENTERTAINMENT PRODUCT CATALOG



A dark, atmospheric photograph of a stage. Several spotlights are visible, casting beams of light upwards. In the foreground, there is a microphone stand and some equipment, possibly a mixer or amplifier, partially illuminated. The overall scene is dimly lit, with the primary light sources being the stage lights.

Columbus McKinnon Entertainment Technology (CM-ET) is an industry leader in providing quality lifting and positioning equipment for riggers around the globe.

In addition to a product line recognized in venues throughout the world, CM-ET has established a network of distributors that provide the highest level of customer service to users in the industry. Wherever the show takes place, a knowledgeable CM-ET distributor is available to offer assistance with parts, service, or accessories.

When searching for products or services to ensure that your event shines, turn to the company with more than 140 years of experience in meeting the needs of our customers—Columbus McKinnon.



## TABLE OF CONTENTS

Classic Lodestar .....	6
Lodestar .....	8
Lodestar (2-ton Single Reeved) .....	10
Lodestar (D8+) .....	14
Lodestar (BGV-C1) .....	15
Prostar .....	16



# GLOSSARY

## ANSI

Refers to American National Standards Institute. Specifications published by ANSI, 1430 Broadway, New York, NY 10018; (212) 642-4900.

## ASME

The American Society of Mechanical Engineers, Three Park Avenue, New York, NY 10016-5990; (212) 591-7722.

## ASTM

Refers to American Society of Testing and Materials. Specifications published by ASTM, 100 Barr Harbor Dr., West Conshohocken, PA 19428; (610) 832-9707.

## CVSA

Commercial Vehicle Safety Alliance, 1620 Eye St. N.W., Washington, DC 20006; (202) 775-8658.

## DOT

Department of Transportation 7th & D Streets S.W. Washington, D.C. 20590; (800) 832-5660

## NACM

Refers to National Association of Chain Manufacturers. Specifications published by NACM, P.O. Box 3143, York, PA 17402-0143; (717) 840-1304.

## OSHA

Occupational Safety & Health Administration, U.S. Department of Labor.

## PLASA

PLASA is the lead international membership body for those who supply technologies and services to the event, entertainment and installation industries. PLASA North American Office: 630 Ninth Avenue, Suite 609, New York, NY 10036; (212) 244-1505

## WORKING LOAD LIMIT

The working load limit of a chain is the maximum load in pounds that should ever be applied to a chain, even when the chain is new and the load is applied in direct tension to a straight length of chain.

# GENERAL INFORMATION

Columbus McKinnon Corporation assumes no responsibility for the misuse or misapplication of any of its products. Products are provided with the express understanding that the purchaser and/or user are thoroughly familiar with the correct application and proper use of such products in rigging. Warnings and definitions are provided as an aid to the user in understanding the correct application and for proper use of the product.

## IMPORTANT

The use of all mechanical equipment presents the possibility of personal injury or property damage if the equipment is not properly installed, operated or maintained. Before using CM chain, accessories, load binders, lifting clamps, or farm hardware, users should become thoroughly familiar with applicable installation, operation and maintenance requirements.

**Observing these general precautions will also help to protect both operators and materials:**

- Inspect equipment before use. Do not use chains, hooks, shackles, links, clips or other equipment components that are bent, elongated, gouged, nicked, excessively worn or damaged. Make certain that nuts, bolts, pins and other fasteners are tightened and secured. Make sure clamps are functional and will grip the load.
- Do not exceed the working load limit of equipment. Refer to catalog for specific working load limit data.
- Center load in hooks, shackles, rings and other such equipment components. Use spacers on bolts and pins as necessary to maintain center loading.
- Do not apply load to hook latches; latches are to retain slack slings and chains only.
- Avoid sudden jerks when applying the load. Rapid load application can produce overloading.
- Free all twists, knots and kinks. Apply load in a straight line fashion.
- Use only alloy chain and attachments (grade 80) for overhead lifting.
- Use clamps and lifting equipment only if authorized and properly trained.

## NOTE:

Columbus McKinnon Corporation assumes no responsibility for the misuse or misapplication of any of its products. Products are provided with the express understanding that the purchaser and/or user are thoroughly familiar with the correct application and proper use. Warnings and definitions are provided as an aid to the user in understanding correct application and proper use. The manufacturer does not accept any liability for damages which result from the product being used in excess of the working load limit or from abuse.

## CM REPAIR/REPLACEMENT GUARANTEE:

Columbus McKinnon Corporation, Amherst, N.Y., guarantees each new chain and forged product of its manufacture under normal use and service to be free from defects in material and workmanship. Our obligation, under this guarantee is limited to making good at our factory this product or any portion thereof, which within one year from this date shall have been returned to us and which on our examination shall disclose such defects. This guarantee shall be null and void if any repairs, annealing, plating, or heat treatment of chain or forged products has been made at any plant other than authorized by Columbus McKinnon Corporation.

This guarantee is expressly in lieu of all other warranties expressed or implied and of all other obligations or liabilities on our part, and we neither assume nor authorize any other person to assume for us any liability in connection with the sale or use of chain and forged products.

# CLASSIC LODESTAR®

## ELECTRIC CHAIN MOTOR

### CAPACITIES

1/8 to 2 TON  
Metric Rated.

### LIFT

Other lifts available.  
Lifting speeds of 8 to 64 FPM at 60 Hz.

The legendary CM-ET Classic Lodestar electric chain motor is back for a command performance. Leading the entertainment industry for more than three decades, this workhorse offers best-in-class performance, safety and reliability. The Classic Lodestar is universally trusted by rigging professionals around the world and is ideal for touring concerts and productions both indoors and out.

### BENEFITS & FEATURES

#### PROVEN BRAKE DESIGN

AC electromechanical brake has been field tested in more than one million Lodestar hoists worldwide.

#### LOW VOLTAGE CONTROL

110 volt for long cable runs without voltage drop. 24 and 48 volt optional. Single-phase and three-phase also available.

#### LIGHTWEIGHT, CAST ALUMINUM HOUSING

Durable and strong cast-aluminum housing is black powder coated for low visibility.

#### LOAD-TESTED, ZINC PLATED CHAIN IS MADE IN USA

Designed and manufactured by CMCO. Zinc plated to protect against corrosion. Optional black finish available.

### OPTIONAL FEATURES

#### SINGLE OR DOUBLE DC BRAKE

Field Installation Kit available for single or double DC brake. The double option features two independent acting DC brakes for redundant braking.

#### DOUBLE LIMIT SWITCH

Adjustable screw limit switch that will automatically stop the hook at any predetermined point when either hoisting or lifting.

#### ENCODERS

Available for positioning incremental and absolute.

#### VARIABLE SPEED UNITS AVAILABLE (VFD)

Varistar or variable speed versions available, please contact your CM-ET sales representative for details.

#### H4-DUTY RATED

Designed for heavy-duty applications.

#### SAFE & QUICK VOLTAGE CHANGE

Finger safe wiring and quick-change, plug-and-play connectors allow for easy voltage change from 208/230 to 460. Prevents improper voltage connections that may cause hoist damage.

#### OVER-TRAVEL PREVENTION

Adjustable limit switch prevents load from over-travel in both up and down directions.

#### OVERLOAD PROTECTION

Helps prevent lifting of dangerous loads.

#### CM ALLOY LATCHLOK® HOOKS

Latchlok® hooks combine innovative design and solid allow steel. I-beam construction offers more reliable performance than any other hook on the market.

- One-hand operation and recessed push-button thumb release for smooth and dependable opening.
- Hook remains locked until released by the operator, even if chain goes slack.
- Sturdy forged heat treated I-beam construction for strong yet lightweight hooks.
- Lifetime warranty.
- Made in U.S.A.

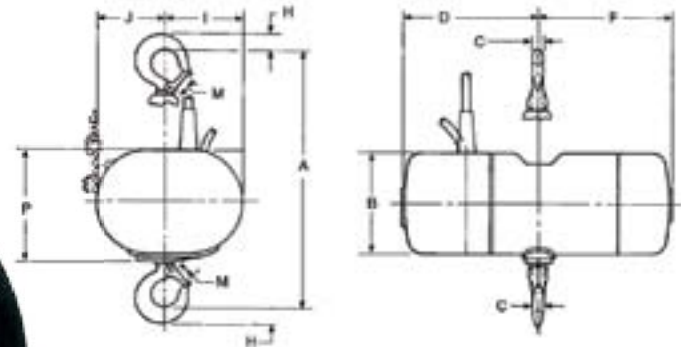


**SPECIFICATIONS**

Model	Maximum Capacity		Hoist Lifting Speed		Less Chain		10 Foot Lift		60 Foot Lift	
					Product Code		Product Code		Product Code	
	Tons	kg	FPM	m	115V	230/460V	115V	230/460V	115V	230/460V
B	1/4	(250)	16	(4)	3140CF	3181	3140CF	3181S	3140CF	3181S
C	1/4	(250)	32	(8)	3200CF	3182	3200CF	3182S	3200CF	3182S
F	1/2	(500)	16	(4)	2867	3183	2867CF	3183S	2867CF	3183S
J	1/2	(500)	32	(8)	3394CF	3184	3394CF	3184S	3394CF	3184S
JJ	1/2	(500)	64	(16)	-	-	-	-	-	-
L	1	(1000)	16	(4)	3609	3185	3609CF	3185S	3609CF	3185S
LL	1	(1000)	32	(8)	-	3187	-	-	-	-
R	2	(2000)	8	(2)	4238CF	3186	4238CF	3186S	4238CF	3186S
RR	2	(2000)	16	(4)	-	3188	-	3188S	-	3188S

**DIMENSIONS**

Model	Dimensions Inches (mm)									
	A	B	C	D	F	H	I	J	M	P
B, C, F	16-1/4 (412.75)	6-1/8 (155.58)	11/16 (17.46)	11 (279.40)	7-3/4 (196.85)	1 (25.40)	4-13/16 (122.24)	3-15/16 (100.01)	1 (25.40)	6-5/8 (168.28)
J, JJ, L, LL	18-9/16 (471.49)	7-5/8 (193.68)	7/8 (22.23)	9-1/2 (241.30)	10-11/16 (271.46)	1-3/16 (30.16)	7-1/4 (184.15)	5-7/16 (138.11)	1-1/8 (28.58)	7-13/16 (198.44)
R, RR	24-1/2 (622.30)	7-5/8 (193.68)	1-1/8 (28.58)	9-1/2 (241.30)	10-11/16 (271.46)	1-1/2 (38.10)	6-3/16 (157.16)	6-1/2 (165.10)	1-5/16 (33.34)	7-13/16 (198.44)



# LODESTAR®

## ELECTRIC CHAIN MOTOR

### CAPACITIES

1/8 to 2 Ton

### LIFT

60 feet standard (other lifts available)

### SPEEDS

5 to 100 feet/minute

### VOLTAGES

1-phase & 3-phase available

From world touring rock concerts and Broadway musicals to Las Vegas shows and sporting events, the CM Lodestar is the trusted industry workhorse.

### BENEFITS & FEATURES

#### IP 66 RATING

An Ingress Protection (IP) Rating of 66 indicates that the Lodestar offers protection from dust and high-pressure water – making this unit ideal for use in outdoor environments.

#### HIGH-PERFORMANCE COMPOSITE CORD GRIPS

Prevent water from entering the motor body at the pendant and power cord points of entry.

#### CONTINUOUS GASKETS

Create a waterproof seal between the gearbox assembly and the back frame and motor covers.

#### O-RINGS ON LIFT WHEEL BEARING

Prevent water from entering the motor body through the lift wheel opening.

#### 5 POCKET LIFTWHEEL

Improved chain wear & smooth lifting.

#### CLUTCH OUTSIDE GEAR TRAIN

Meets international standards.

#### PRECISION HELICAL GEARING

For quieter operation.

#### REDESIGNED CONTROL PANEL

For easier access.

#### HEAVY DUTY DC BRAKE

Designed for a long service life, the brake location allows for quick access & easy inspection.

#### LOW VOLTAGE CONTROL

110 Volt for long cable runs without voltage drop. 24 & 48 Volt optional. (Low Voltage Unit Only)

#### DURABLE & LIGHTWEIGHT HOUSING

Cast aluminum. Black powder coated finish for low visibility.

#### GEARING

Helical design for long wear life and smooth operation.

#### LOAD CHAIN

Designed and manufactured by Columbus McKinnon. Zinc plated to protect against corrosion. Optional black finish available.

#### DUTY CYCLE

H-4 duty rated for heavy duty application. 2M+ FEM class. 50% Duty Cycle or 300 on/off per hour.

#### ELECTRICAL

Finger safe wiring meets all electrical codes. Quick change plugs allow for voltages 208 through 460. Prevents improper voltage connections which can cause hoist damage. (Low Voltage Unit Only)

#### ADJUSTABLE LIMIT SWITCH

Adjustable screw limit switch that will automatically stop the hook at any predetermined point when either lifting or lowering, preventing overtravel. (Low Voltage Unit Only)

#### OVERLOAD PROTECTOR

Designed to prevent lifting of excessive overloads. Helps prevent lifting of dangerous overloads.

#### METRIC RATED MEETS REQUIREMENTS

Meets or exceeds world standards.

#### ROAD READY

Easy to stow and travel.

#### LIFETIME WARRANTY

The industry's best.





**OPTIONAL FEATURES**

**DOUBLE DC BRAKE**

Two independent acting DC brakes for redundant braking. Field installation kit available.

**AC ELECTRIC BRAKE**

**DOUBLE LIMIT SWITCH**

Adjustable screw limit switch that will automatically stop the hook at any predetermined point when either hoisting or lifting.

**ENCODERS**

Available for positioning incremental and absolute.

**VARIABLE SPEED UNITS AVAILABLE (VFD)**

Varistar or variable speed versions available, please contact your CM-ET sales representative for details.

**CM ALLOY LATCHLOK® HOOKS**

Latchlok® hooks combine innovative design and solid allow steel. I-beam construction offers more reliable performance than any other hook on the market.

- One-hand operation and recessed push-button thumb release for smooth and dependable opening.
- Hook remains locked until released by the operator, even if chain goes slack.
- Sturdy forged heat treated I-beam construction for strong, yet lightweight hooks.
- Lifetime warranty.
- Made in U.S.A.

**CHAIN BAGS**

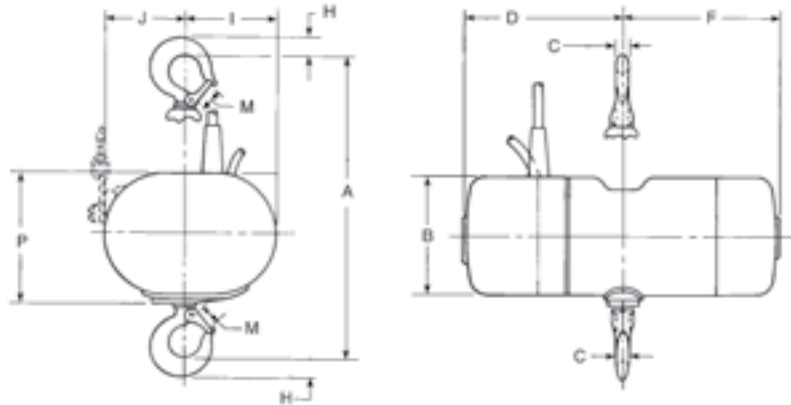
Cloth type bags easy-to-mount.

**DIRECT CONTROL UNITS**

The CM Lodestar is available as a Direct Control Unit. Featuring a single cable, this Direct Control Unit can be used as part of a system with multiple units with a single control. The Lodestar is compatible with most Direct Control Motor Controllers.

**DIMENSIONS**

Drawing Legend	Dimensions (in.)		
	Models B, C, F	Models J, JJ, L, LL	Models R, RR
A	16.20	18.5625	24.125
B	6.08	7.62	7.62
C	.67	.875	1.125
D	11.80	10.03	10.03
F	8.94	13.01	13.01
H	1	1.1875	1.5
I	4.46	6.93	5.57
J	4.22	5.69	7.05
M	1	1.125	1.3125
P	6.62	8.22	8.22



**SPECIFICATIONS**

Model	Rated Load (Ton) *	Product Code		Chain Size Used (in.)	Lifting Speed (FPM)	Motor HP	Full Load Amps		Work Rating		Reeving	Lift (Feet) ***
		115-1-60	230/460-3-60				115-1-60	230/460-3-60	HMI	FEM		
B	1/4	3140NH	3169NH	1/4	16	1/4	5.3	1.8/1.1	H4	2M+	1	60
C	1/4	3200NH	3201NH	1/4	32	1/2	7.9	2.2/1.3	H4	2M+	1	60
F	1/2	2867NH	2868NH	1/4	16	1/2	7.9	2.2/1.3	H4	2M+	1	60
J	1/2	3394NH	3482NH	5/16	32	1	11.9	3.7/2.2	H4	2M+	1	60
JJ	1/2	n/a	4271NH	5/16	64	2	n/a	7.9/5.0	H4	2M+	1	60
L	1	3609NH	3610NH	5/16	16	1	11.9	3.7/2.2	H4	2M+	1	60
LL	1	n/a	4273NH	5/16	32	2	n/a	7.9/5.0	H4	2M+	1	60
R	2	4238NH	4239NH	5/16	8	1	11.9	3.7/2.2	H4	2M+	2	60
RR	2	n/a	4272NH	5/16	16	2	n/a	7.9/5.0	H4	2M+	2	60

\* Metric Tons

\*\*\* Lifts other than 60 ft. available (Standard Units shipped less chain unless specified)

Consult factory for additional speeds and capacities

**2-TON, SINGLE REEVED MODELS (Next page)**

# LODESTAR®

## ELECTRIC CHAIN MOTOR

### 2-TON SINGLE-REEVED

The CM® entertainment Lodestar® is now available as an economical 2-ton, single-reeved unit that's ideal for a variety of lifting applications. And, because it's a single-reeved unit, overall weight is decreased making it easier to transport and rig compared to a traditional double-reeved unit.

#### BENEFITS & FEATURES

##### IP 66 RATING

An Ingress Protection (IP) Rating of 66 indicates that the Lodestar offers protection from dust and high-pressure water – making this unit ideal for use in outdoor environments.

##### HIGH-PERFORMANCE COMPOSITE CORD GRIPS

Prevent water from entering the motor body at the pendant and power cord points of entry.

##### CONTINUOUS GASKETS

Create a waterproof seal between the gearbox assembly and the back frame and motor covers.

##### O-RINGS ON LIFT WHEEL BEARING

Prevent water from entering the motor body through the lift wheel opening.

##### EASY TO TRANSPORT & RIG

With less chain than double-reeved units, the 2-ton, single-reeved Lodestar is lighter, making it easier to transport and rig.

##### ZINC PLATED LOAD CHAIN

Designed and manufactured in the USA by Columbus McKinnon, our 10 millimeter, zinc-plated Star Grade load chain protects against corrosion.

##### IMPROVED CHAIN LIFE

5-pocket lift wheel provides better chain and lift wheel engagement for smoother lifting and reduced vibration, equating to less wear and a longer chain life.

##### LESS MAINTENANCE & EASIER INSPECTION

- Brake location allows for quick access and easy inspection.
- Lifetime grease-lubricated gear box means no oil change is required.
- Clutch located outside the gear box allows for easy access, which eliminates the need for complete disassembly and reduces downtime.

##### IMPROVED SERVICEABILITY

Easy access to the clutch, motor, electrical control panel and brake assembly.

##### METRIC RATED

##### EASY-ACCESS CONTROL PANEL

Finger-safe wiring and plug-and-play connectors on the control panel allow for quick voltage change, easy access to terminal strips and simple fuse installation.

##### LONGER SERVICE LIFE

- Heavy-duty DC brake is designed for a long service life.
- Lifetime grease-lubricated gear box and helical gearing ensures better wear and smooth operation. Heavy-duty-rated motors.

##### IMPROVED LOAD SAFETY

Clutch is located outside the load path, preventing slipping of the load in an overload condition when the brake is not powered.

##### ADJUSTABLE LIMIT SWITCH

Easy-to-adjust screw limit switch automatically stops the hook at any predetermined point when either lifting or lowering, preventing overtravel.

##### OVERLOAD PROTECTOR

Helps prevent lifting of dangerous overloads.

##### STANDARD ROTATABLE LIMIT SWITCH

Designed for quick reset of limit position.

##### LIFETIME WARRANTY

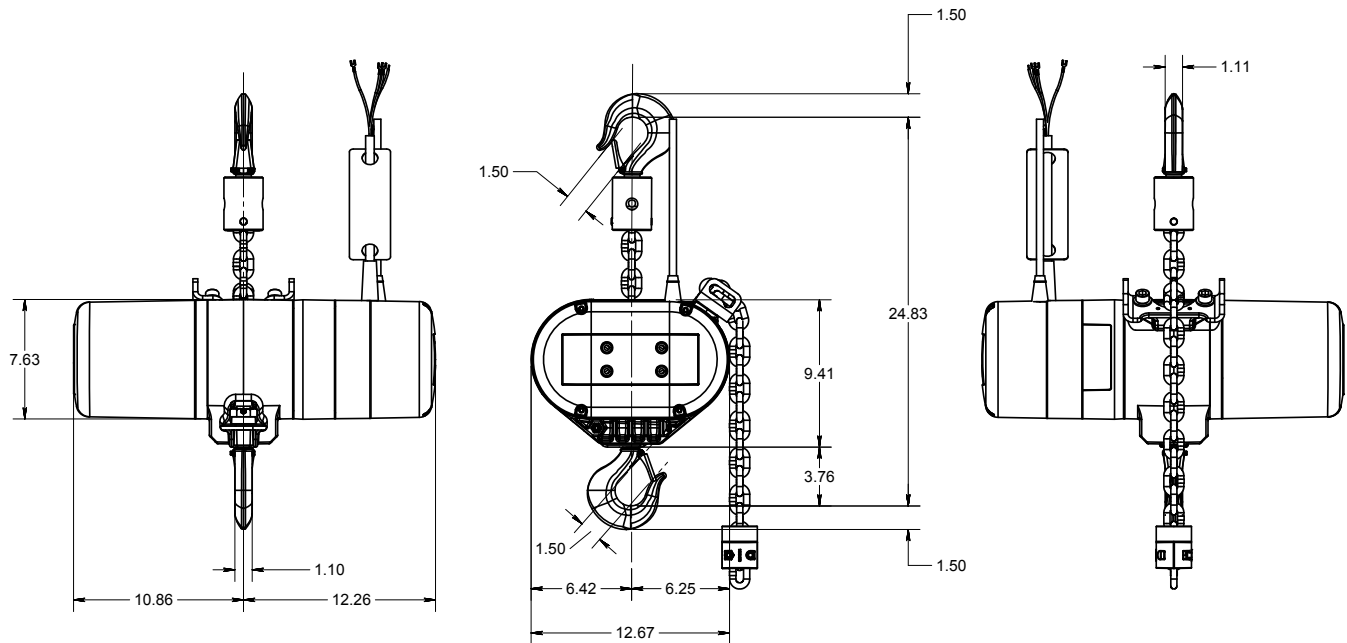
The industry's best warranty against manufacturing and material defects.

##### SWIVEL OR RIGID HOOK SUSPENSION AVAILABLE



NEW HIGH-PERFORMANCE COMPOSITE CORD GRIPS





Dimensions (in inches) are RRS model CM-ET Lodestar 2 Ton Single Reeved with Swivel Latch Type Hook Suspension.

## OPTIONAL FEATURES

### DOUBLE DC BRAKE

Two independent acting DC brakes for redundant braking. Field installation kit available.

### DOUBLE LIMIT SWITCH

Adjustable screw limit switch that will automatically stop the hook at any predetermined point when either hoisting or lifting.

### ENCODERS

Available for positioning incremental and absolute.

### VARIABLE SPEED UNITS AVAILABLE (VFD)

Varistar or variable speed versions available, please contact your CM-ET sales representative for details.

### CM ALLOY LATCHLOK® HOOKS

Latchlok® hooks combine innovative design and solid alloy steel. I-beam construction offers more reliable performance than any other hook on the market.

- One-hand operation and recessed push-button thumb release for smooth and dependable opening.
- Hook remains locked until released by the operator, even if chain goes slack.
- Sturdy forged heat treated I-beam construction for strong, yet lightweight hooks.
- Lifetime warranty.
- Made in U.S.A.

### DIRECT CONTROL UNITS

The CM Lodestar is available as a Direct Control Unit. Featuring a single cable, this Direct Control Unit can be used as part of a system with multiple units with a single control. The Lodestar is compatible with most Direct Control Motor Controllers.

### D8+

Meets all Standard VPLT SR 2.0/SQP2 requirements.

### BGV-C1

Meets all standard C1 and DIN 56950 requirements.



# LODESTAR<sup>®</sup>

## ELECTRIC CHAIN MOTOR

### KEY COMPONENTS

#### 1. LIFT WHEEL

5 Pocket Liftwheel increases chain and liftwheel engagement while providing smoother lifting, less vibration and reduced chain wear when properly maintained.

#### 2. BRAKE

Heavy Duty DC Brake is standard. AC Brake and Double DC Brake are also available.

#### 3. LIMIT SWITCH

Adjustable screw limit switch that will automatically stop the hook at any predetermined point when either hoisting or lifting.

#### 4. CONTROL PANEL

Provides easy access to controls, plug and play connectors allow for quick voltage change for dual voltage motors. Fuses located on terminal strip (optional).

#### 5. CLUTCH

Designed to prevent lifting of excessive overloads. Located outside the gear box. Adjustable and easy to access.

#### 6. LOAD CHAIN

Sizes available from 1/4 in. to 5/16 in. Meets or exceeds many national and international standards. Zinc plated supplied as standard. Black phosphate finish available. 100% proof tested.

#### 7. INTERNAL CHAIN GUIDE

Stamped Steel guide coated for corrosion resistance and quiet operation, while keeping the load chain and liftwheel aligned.



**1 LIFT WHEEL**



**4 CONTROL PANEL**



**5 CLUTCH**

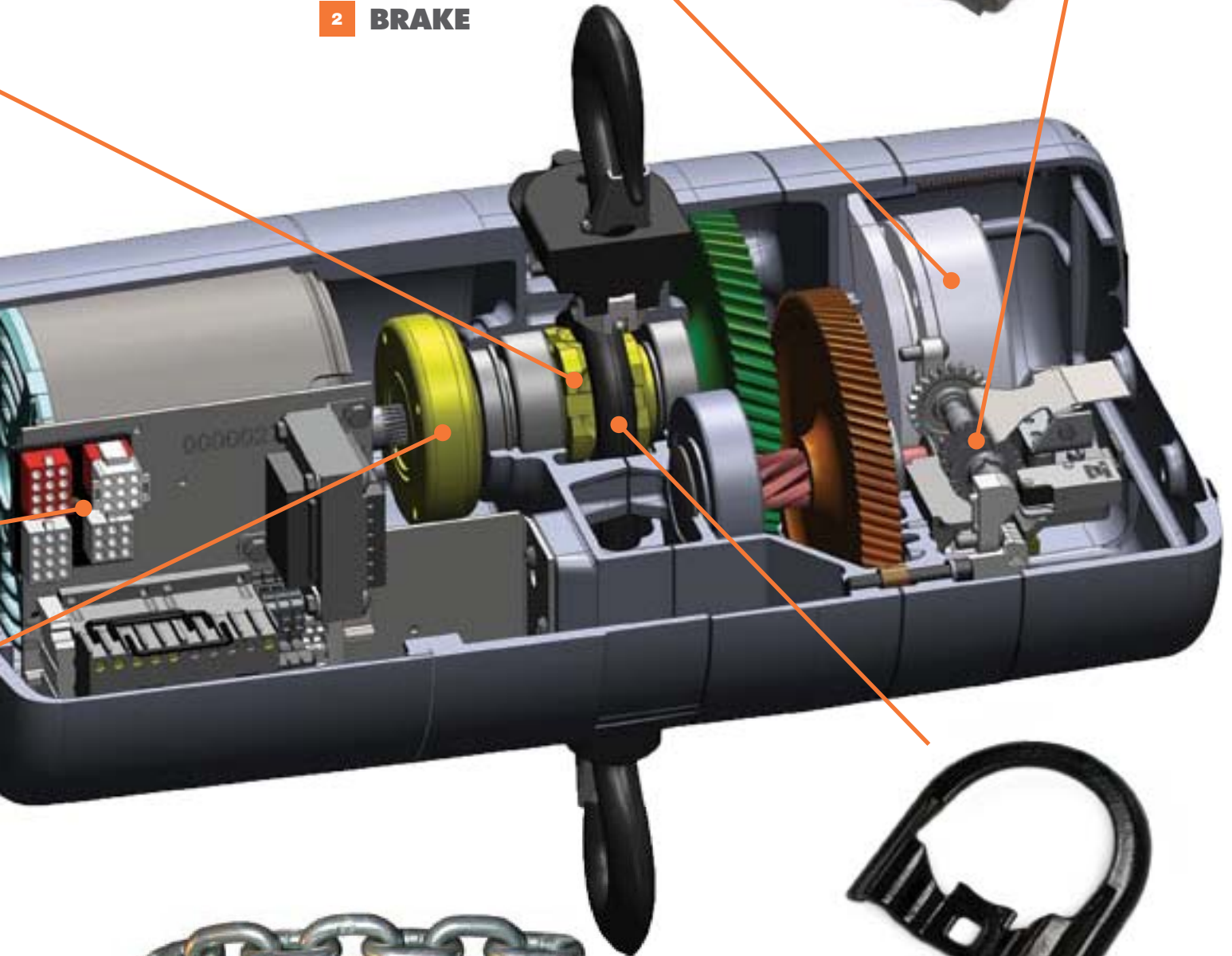
NOTE: Cutaway drawing and key components are representative of the CM Lodestar. For a cutaway or component information on the CM Classic Lodestar or CM 2-Ton Single Reeved Lodestar, consult factory.



**2 BRAKE**



**3 LIMIT SWITCH**



**6 LOAD CHAIN**



**7 INTERNAL CHAIN GUIDE**

# LODESTAR® D8+

## ELECTRIC CHAIN MOTOR

**CAPACITIES**

70 to 1500 KG LIFT

**LIFT**

60 feet standard

**SPEEDS**

5 to 64 feet /min

**VOLTAGES**

3-phase available

The Lodestar D8+ meets all Standard SR2.0 requirements. It's clutch, outside the load path, acts as a precise overload device; and design factor is 10:1 with a double brake installed. The Lodestar D8+ is in accordance with the VPLT Code of Practice.

**BENEFITS & FEATURES**
**10:1 MECHANICAL DESIGN FACTOR**
**ELECTRO-MECHANICAL DOUBLE BRAKES**
**5 POCKET LIFT WHEEL**

For quiet & smooth operation.

**68 DB OPERATIONAL NOISE**

A result of the Double Brake System.

**GEARING**

Precision machined gears heat treated for strength and durability.

**INTERNAL CHAIN GUIDE**

PVC black coated for quieter operation.

**LOW VOLTAGE CONTROL**

110 Volt for long cable runs without voltage drop. 24 & 48 Volt optional.

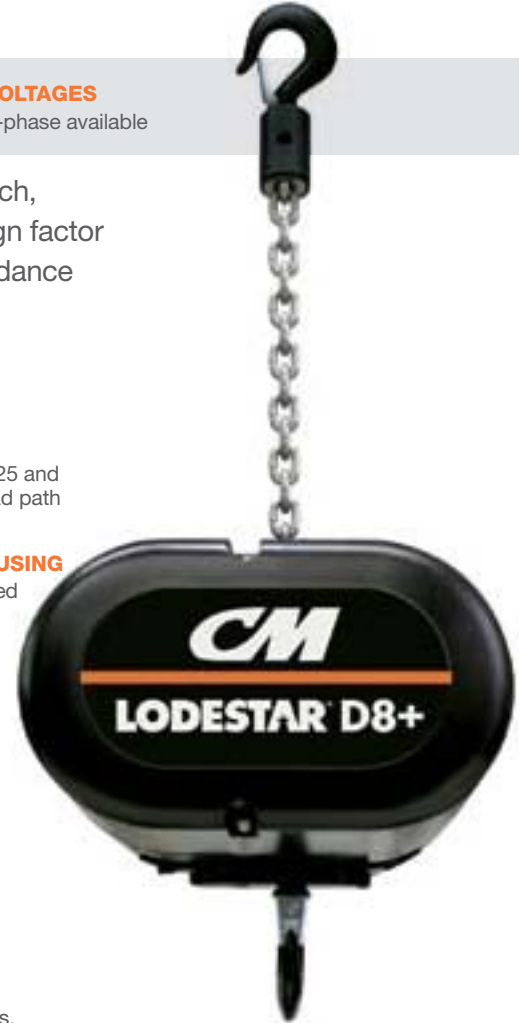
**DUTY CYCLE**

H-4 duty rated for heavy duty application. 2M+ FEM class. 50% Duty Cycle or 300 on/off per hour.

**IP54 PROTECTION CLASS**
**SPECIFICATIONS**

Model	Product Code	Chain Size Used	Rated Load (KG)	Lifting Speed (FPM)	Motor HP	Operating Voltage	Full Load Amps	Work Rating		Reeving	Lift (Feet) ***
								HMI	FEM		
<b>B</b>	3181NHCF	1/4	125	16	1/4	230/460-3-60	1.8/1.1	H4	2M+	1	60
<b>C</b>	3182NHCF	1/4	125	32	1/2	230/460-3-60	2.2/1.3	H4	2M+	1	60
<b>F</b>	3205NH	1/4	250	16	1/2	230/460-3-60	2.2/1.3	H4	2M+	1	60
<b>J</b>	3184NHCF	5/16	250	32	1	230/460-3-60	3.7/2.2	H4	2M+	1	60
<b>JJ</b>	3206NH	5/16	500	64	2	230/460-3-60	7.9/5.0	H4	2M+	1	60
<b>L</b>	3207NH	5/16	650	16	1	230/460-3-60	3.7/2.2	H4	2M+	1	60
<b>LL</b>	3208NH	5/16	500	32	2	230/460-3-60	7.9/5.0	H4	2M+	1	60
<b>R</b>	3209NH	5/16	1300	8	1	230/460-3-60	3.7/2.2	H4	2M+	2	60
<b>RR</b>	3210NH	5/16	1000	16	2	230/460-3-60	7.9/5.0	H4	2M+	2	60
<b>RT</b>	Contact Factory	5/16	1500	5	1	230/460-3-60	3.7/2.2	H4	2M+	3	60

\*\*\* Lifts other than 60ft available (Standard Units shipped less chain unless specified)



# LODESTAR® BGV-C1

## ELECTRIC CHAIN MOTOR

**CAPACITIES**

250 to 1300 KG

**LIFT**

60 feet standard

**SPEEDS**

16 to 100 feet/min

**VOLTAGES**

3-phase available

The Lodestar BGV-C1 Series meets the BGV-C1 German regulation for entertainment rigging. Available with fixed or variable speed, the Lodestar BGV-C1 can be adapted to reach a System Integrity Level 3 (SIL3).\*

**BENEFITS & FEATURES****10:1 MECHANICAL DESIGN FACTOR**

We exceed current standard DIN 56950.

**ELECTRO-MECHANICAL DOUBLE BRAKES****5 POCKET LIFT WHEEL**

For quiet & smooth operation.

**68 DB OPERATIONAL NOISE**

A result of the Double Brake System.

**GEARING**

Precision machined gears heat treated for strength and durability.

**INTERNAL CHAIN GUIDE**

PVC black coated for quieter operation.

**LOW VOLTAGE CONTROL**

110 Volt for long cable runs without voltage drop. 24 & 48 Volt optional.

**DUTY CYCLE**

H-4 duty rated for heavy duty application. 2M+ FEM class. 50% Duty Cycle or 300 on/off per hour.

**UNDERLOAD PROTECTION**

With load cell installed.

**MODULAR MULTI-PIN CONNECTOR**

With multi-wire shielded cable.

**4 POSITION LIMIT SWITCH**

With active spring micro-switch.

**BUILT-IN PLC**

For safety function monitoring, Brake and Limit Switch integrity, Load Cell reading, Overload and Underload settings.

**OVERLOAD PROTECTION**

Rated operational range between 125 and 150/160%. Clutch is outside the load path when disconnected from power.

**DURABLE & LIGHTWEIGHT HOUSING**

Cast aluminum. Black powder coated finish for low visibility.

**METRIC RATED LOAD CHAIN**

Designed and manufactured by Columbus McKinnon. Zinc plated to protect against corrosion. Black phosphate finish optional.

**THE INDUSTRY'S BEST LIFETIME WARRANTY****MEETS OR EXCEEDS WORLD STANDARDS**

Meets German Regulation BGV-C1.

**CHAIN STOP**

Mounted on load chain to prevent overtravel.

**OPTIONAL FEATURES****ENCODERS**

Available for positioning incremental and absolute.

\* SIL3 requires a BGV-C1 SIL3 certified controller not included.

**SPECIFICATIONS**

Model	Product Code	Chain Size Used	Rated Load (kg)	Lifting Speed (FPM)	Motor HP	Operating Voltage	Full Load Amps	Reeving	Protection Class	Noise Level	Lift (Feet) ***
F	Contact Factory	1/4	250	16	1/2	230/460-3-60	2.2/1.3	1	IP54	68 dB	60
J		5/16	250	32	1	230/460-3-60	3.7/2.2	1	IP54	68 dB	60
JJ		5/16	500	64	2	230/460-3-60	7.9/5.0	1	IP54	68 dB	60
L		5/16	650	16	1	230/460-3-60	3.7/2.2	1	IP54	68 dB	60
LL		5/16	500	32	2	230/460-3-60	7.9/5.0	1	IP54	68 dB	60
RR		5/16	1000	16	2	230/460-3-60	7.9/5.0	2	IP54	68 dB	60
VARISTAR		5/16	500	0 to 100	3-1/2	230/460-3-60	10.4/6.2	1	IP54	68 dB	60

\*\*\* Lifts other than 60ft available (Standard Units shipped less chain unless specified)

# PROSTAR®

## ELECTRIC CHAIN MOTOR

<b>CAPACITIES</b> 300 to 1000 LBS	<b>LIFT</b> 60 feet standard	<b>SPEEDS</b> 8 to 40 feet/minute	<b>VOLTAGES</b> 3-phase available
--------------------------------------	---------------------------------	--------------------------------------	--------------------------------------

Lightweight, quiet and portable, the CM Prostar is designed and built for the unique rigging needs encountered at small venues. Featuring an overload device that protects the hoist, operator and structure from damaging overloads.

### BENEFITS & FEATURES

#### DC ELECTRO-MECHANICAL BRAKES

Non-adjusting for low maintenance and quiet operation.

#### GEARING

Precision machined gears heat treated for strength and durability.

#### CHAIN GUIDE

One piece jam free for smooth operation.

#### HOUSING

Lightweight, cast aluminum, durable and strong black powder coated finish for low visibility.

#### LIFT WHEEL

CM patented 10 pocket oblique lift wheel for quiet and smooth operation.

#### LOW VOLTAGE CONTROL

110 Volt for long cable runs without voltage drop. 24 and 48 Volt optional.

#### DUTY CYCLE

H-4 duty rated, designed for heavy duty application.

#### OVERLOAD PROTECTION

Helps prevent lifting of dangerous overloads.

#### CHAIN STOP

Mounted on Load Chain prevents over-travel.

#### METRIC RATED

**LOAD CHAIN**  
Designed and manufactured by Columbus McKinnon. Zinc plated to protect against corrosion. Black phosphate finish optional.

#### THE INDUSTRY'S BEST LIFETIME WARRANTY

#### MEETS OR EXCEEDS WORLD STANDARDS

#### OPTIONAL FEATURES

##### CHAIN BAG

Easy-to-Mount Cloth Type Bags.

##### DOUBLE BRAKE

##### ENCODER

##### UPPER SWIVEL HOOK SUSPENSION



### SPECIFICATIONS

Capacity	Number of Chains	Motor HP	Lifting Speed (FPM)	Weight Less Chain (lbs.)	Weight 1 ft. of Chain (lbs.)	Full Load Amps		
						1-Phase	3-Phase	
							220v	415v
300	1	1/6	16	28	.35	3.6	1.2	.6
300	1	1/6	24	28	.35	-	1.1	.6
500	1	1/6	16	28	.35	-	1.2	.7
500	1	1/6	12	28	.35	4	-	-
600	2	1/6	8	36	.7	3.6	1.1	.6
600	2	1/6	12	36	.7	-	1.1	.6
1000	2	1/6	8	36	.7	-	1.2	.7

Drawing Legend	Reeving	
	Single	Double
A	11"	12 1/8"
B	2 15/16"	3 1/2"
C	2 7/8"	2 3/8"

Models (lbs.)	Lift Speed (FPM)	Operating Voltage			
		1-Phase		3-Phase	
300	16	115-1-50/60	220-1-50/60	220-3-50/60	415-3-50/60
300	24	-	-	220-3-50/60	415-3-50/60
300	40	-	-	220-3-50/60	415-3-50/60
500	12	115-1-50/60	220-1-50/60	-	-
500	16	-	-	220-3-50/60	415-3-50/60
500	20	-	-	220-3-50/60	415-3-50/60
600	8	115-1-50/60	220-1-50/60	-	-
600	12	-	-	220-3-50/60	415-3-50/60
1000	6	115-1-50/60	220-1-50/60	-	-
1000	8	-	-	220-3-50/60	415-3-50/60
1000	12	-	-	220-3-50/60	415-3-50/60

